

Avlemonas | Building plot with unique view

Located on the picturesque Avlemonas, one of the most beautiful Kytherian villages, this 1042 sqm. is a rare property for both domestic and professional development.

Just meters away from the Avlemonas Bay, the commercial center of the village and the medieval Castello monument, this plot enjoys sea view to the South.

The potential for this angular plot is limitless, since it has a building margin of 400 sqm. for residential house and 833 sqm for professional unit.

The southern view to the Palaiopoli is one-of-a-kind.



image #01

Direct view
to the
open sea!



A step
away
from
the sea,
with
wide
views
to
the
South

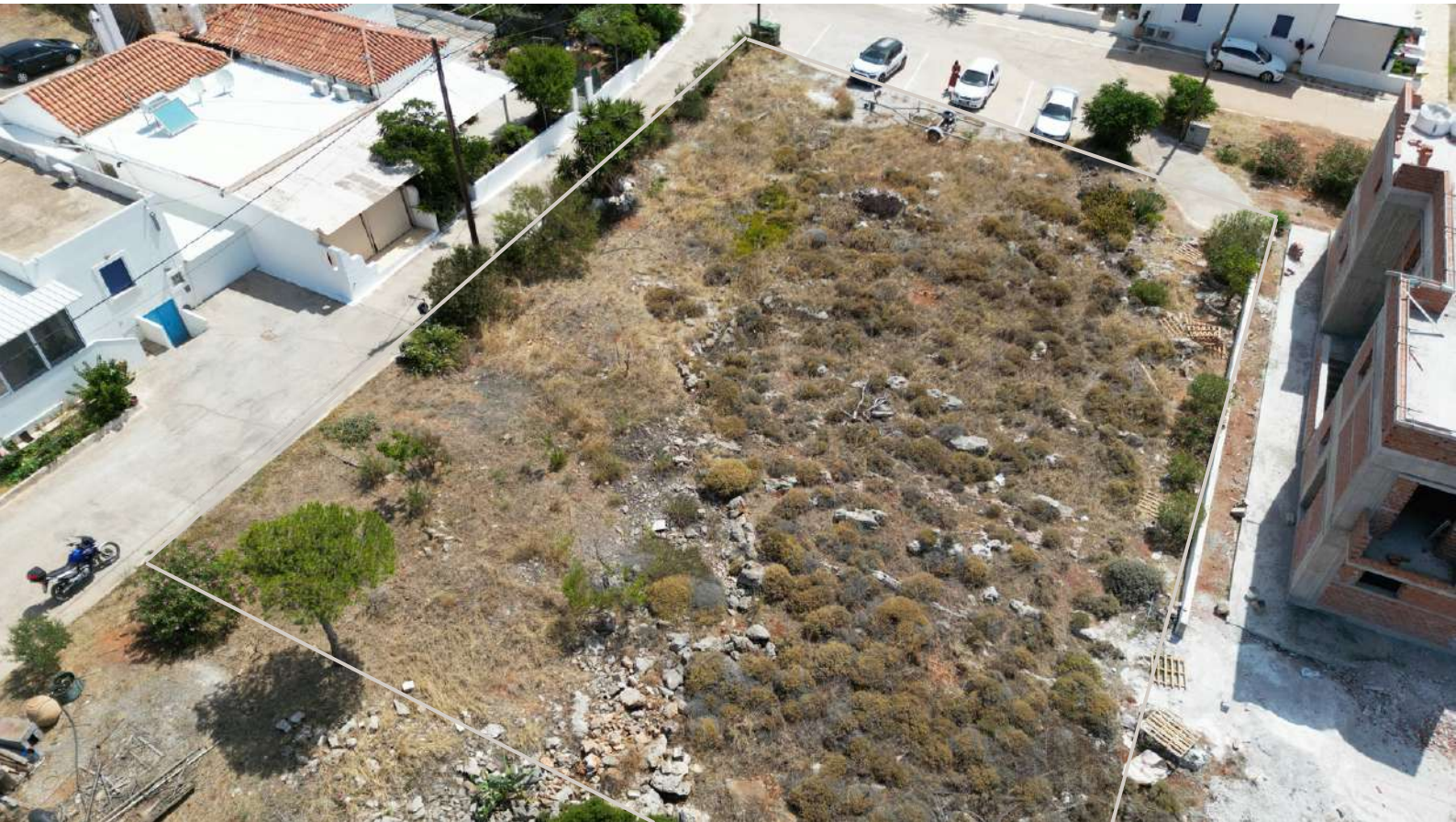
image #02

Avlemonas is a picturesque village on the Eastern Kythera with long and exciting history, attracting many visitors each year.



image #03

image #04



The location and the size of this plot make a unique option for both residential and professional development.



image #05

KYTHERA PROPERTIES
web: kytheraproperties.com



This property is
the
ideal
choice for both a
family
holiday
house
or
investment
property,
in a
rare
location



Price | 500.000 €